



PRIVATE EVENTS KIT



欢迎光临

The Warehouse Hotel was built in 1895 along the Singapore River as part of the Straits of Malacca trade route. At that time, the area was a hotbed of secret societies, underground activities and liquor distilleries.

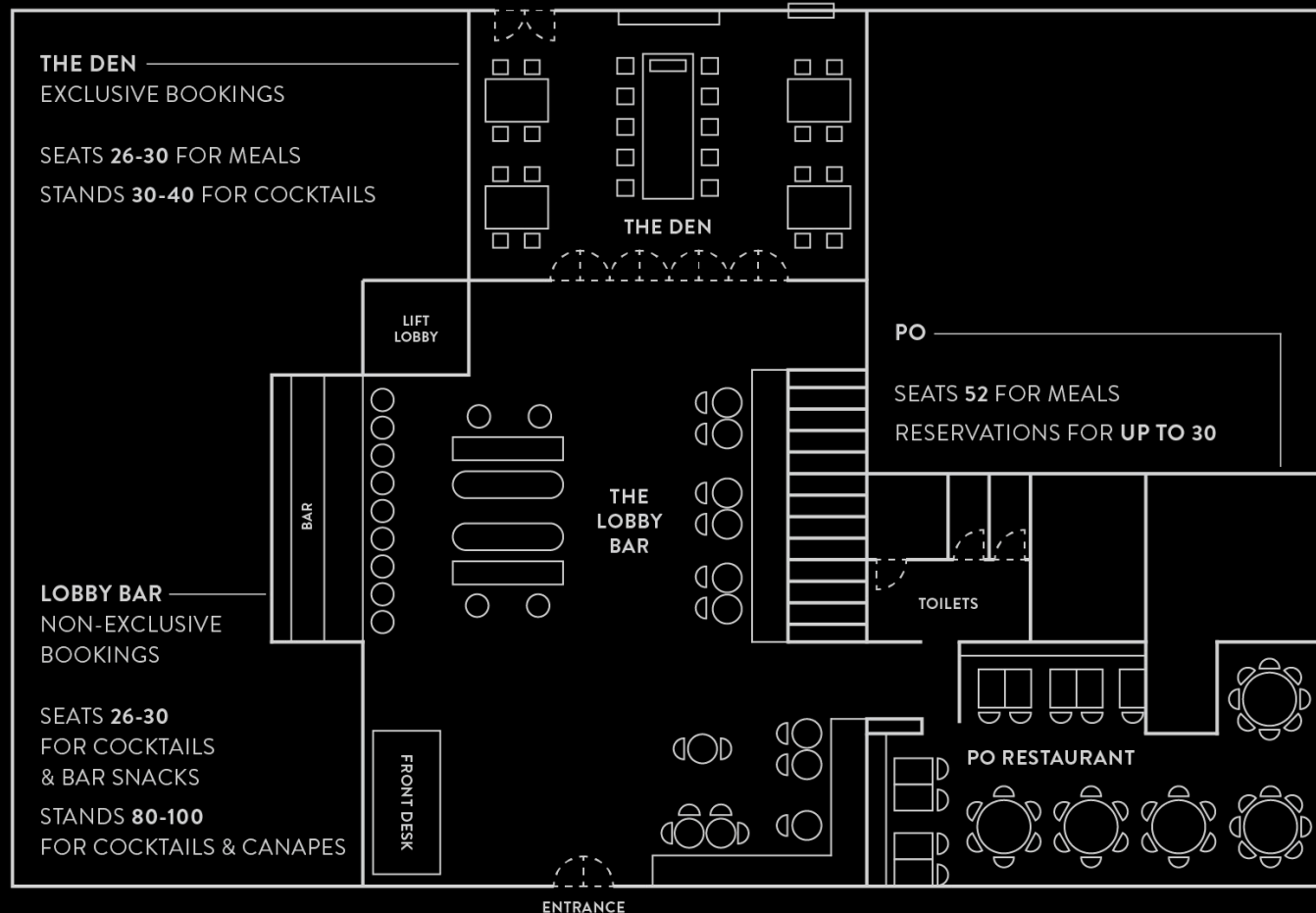
Today, while much of that history has disappeared, The Warehouse Hotel has been meticulously restored as a modern 37-room boutique hotel, focusing on heritage and local culture. Open as of January 2017, it delivers thoughtful hospitality with historically-detailed rooms, classic local dishes and craft cocktails in the vibrant neighbourhood of Robertson Quay.



NOT JUST A HOTEL, BUT AN EXPERIENCE

The Warehouse Hotel is here to help you plan your event like no other, be it a cocktail reception, company workshop, product launch or personal celebration. Pick a date and come celebrate good times with us.

SPACE OVERVIEW (FIRST FLOOR)



THE DEN

The back hall of our lobby, The Den, doubles up as a lounge and private event space. We've got the perfect space for all your dinners, meetings, cocktail parties, product launches and intimate company gatherings that is sure to impress.





THE DEN

Exclusive booking
available

Capacity —
Seated : up to 30
Standing : up to 40
with furniture removal

F&B —
Communal style,
sharing portions

Canapes

THE DEN LAYOUT (MEETINGS)

LONG WOODEN TABLE

Table in the centre is permanent fixed and cannot be moved

MARBLE TABLE

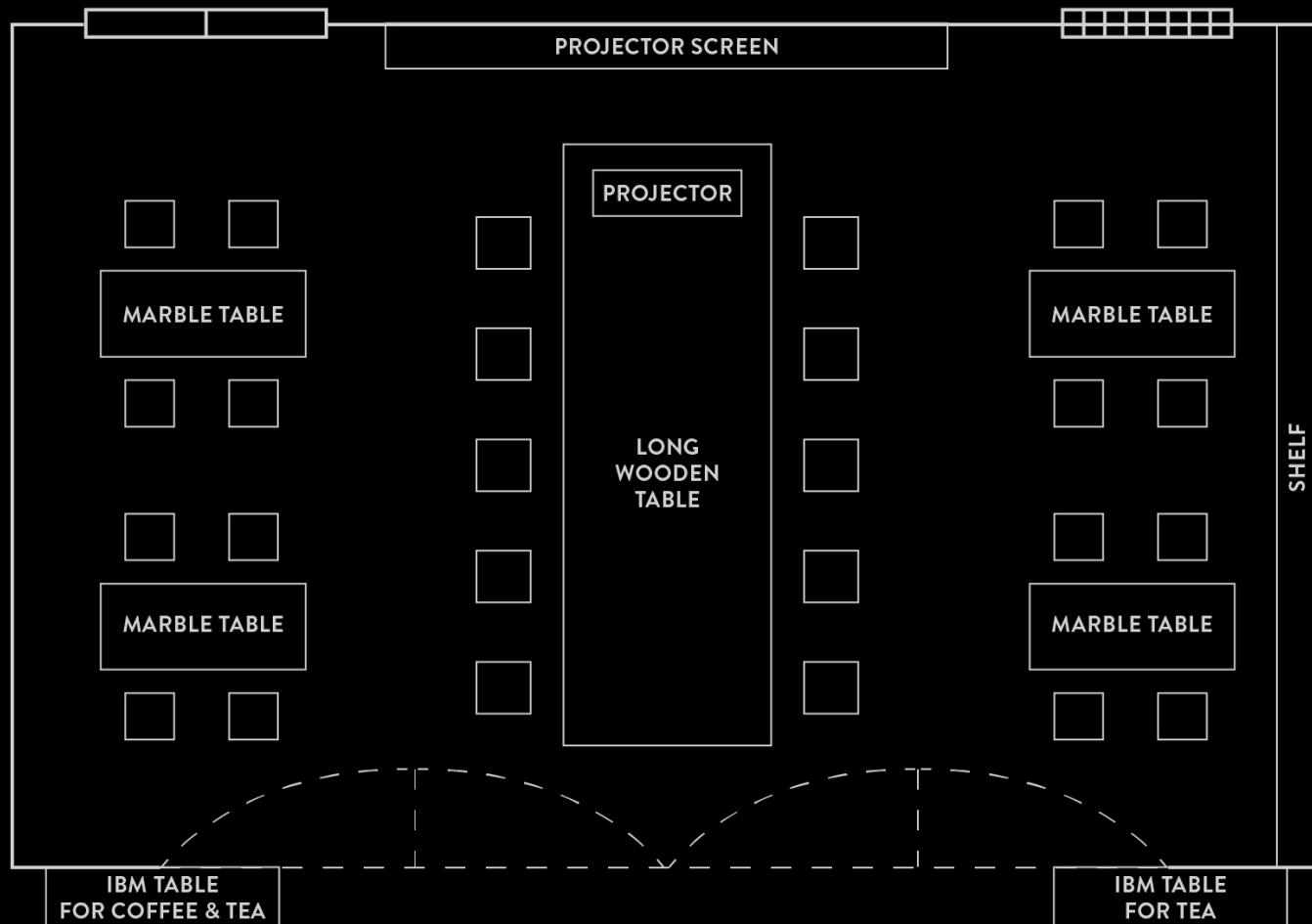
Tables on the sides are of lower height; can be removed or shifted around

GLASS PANELS

Blinds can be brought down for privacy

SHELF

Display items can be removed for storage in a chargeable guest room



THE DEN LAYOUT (GROUP DINING)

LONG WOODEN TABLE

Table in the centre is permanent fixed and cannot be moved

MARBLE TABLE

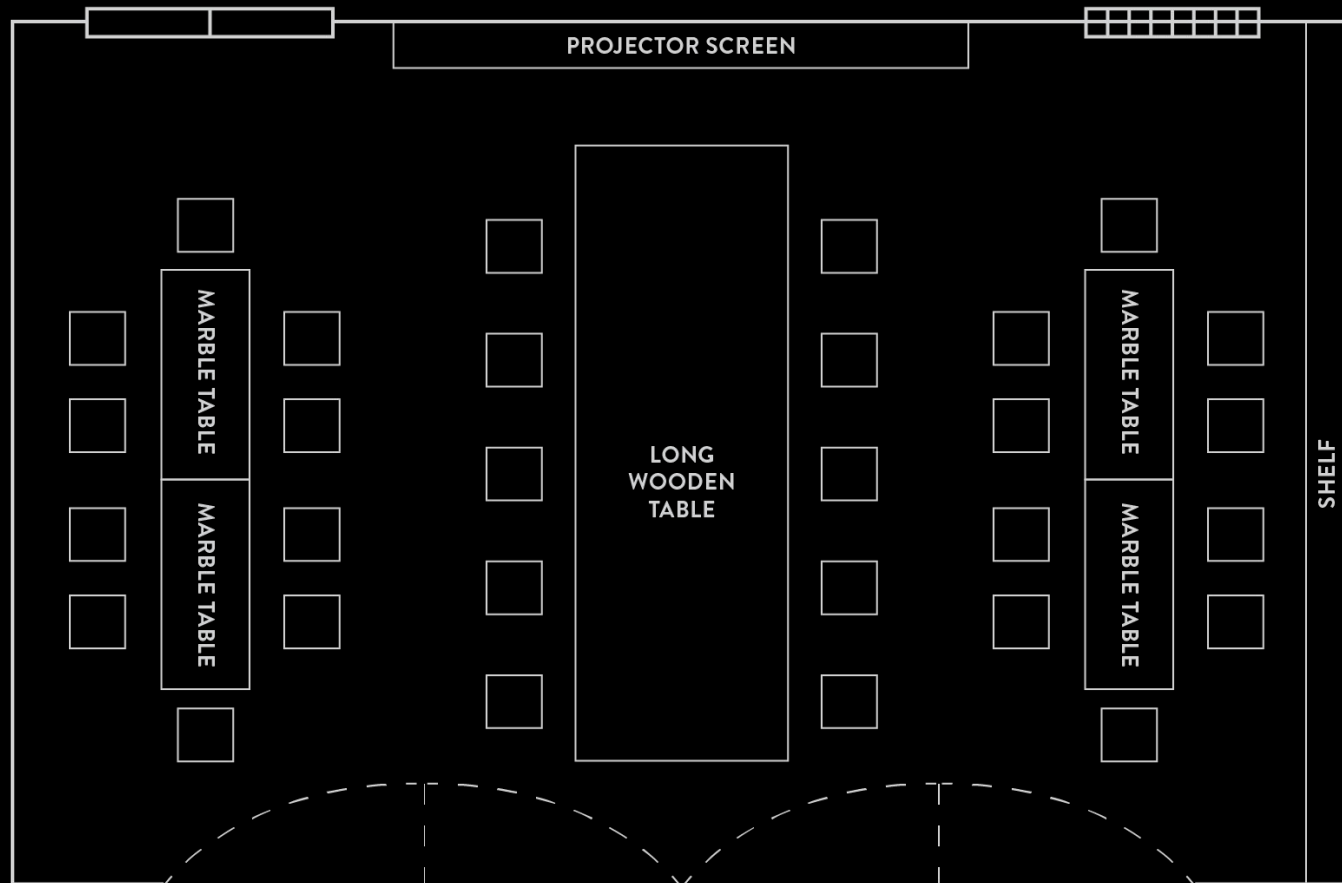
Tables on the sides are of lower height; can be removed or shifted around

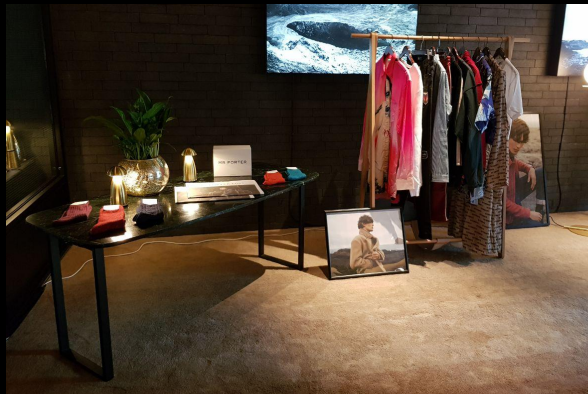
GLASS PANELS

Blinds can be brought down for privacy

SHELF

Display items can be removed for storage in a chargeable guest room







THE LOBBY

Combining culture and history with design and comfort, The Lobby of The Warehouse Hotel consists of a big open space, reminiscent of its godown heydays. Our signature Lobby Bar showcases an in-house cocktail programme featuring house-made alcohol infusions and essences.

With ample room, award-winning design and impeccable F&B offerings, this space is ideal for all events - big or small.

THE LOBBY

A section of The Lobby Bar is available for non-exclusive reservations

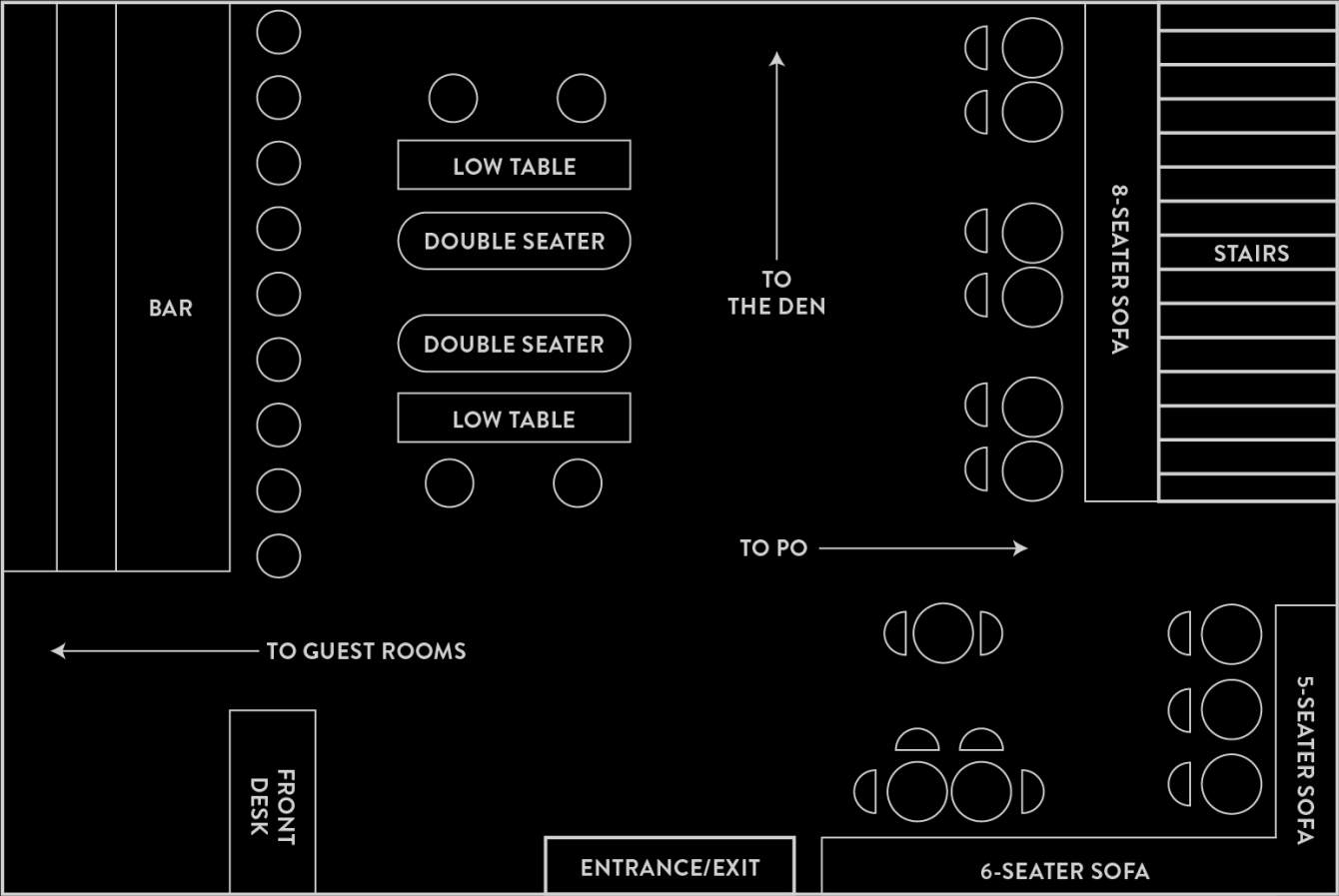
The Lobby Bar can be reserved in addition to The Den

Capacity —
Seated: group reservations up to 20 for drinks
Standing: up to 80

F&B —
Canapes
Bar Snacks



THE LOBBY
LAYOUT







PO RESTAURANT

The hotel's flagship restaurant, Po, is a refined modern Singaporean concept presenting an array of local classics and elevated Singaporean staples. Po seeks to bridge the gap between our nation's vibrant culinary heritage and our rich collective memories of home-cooked specialties.

PO RESTAURANT

Po serves local favourites with an elevated twist including rolling your own Popiah, charcoal-grilled Iberico Satay, Ngoh Hiang, Paper Spring Chicken and Wagyu Cheek Rendang to name a few.

Capacity —

Seated : 52 guests

Standing : group reservations
up to 30 guests

Non-exclusive
bookings only



CAPACITY



THE DEN —

Exclusive

Seated : up to 30 guests

Standing : up to 40 guests

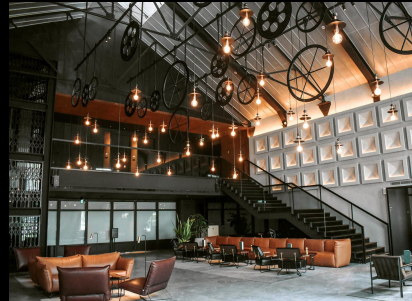


THE LOBBY BAR —

Non-exclusive only

Seated : groups up to
20 guests

Standing : up to 80 guests



THE DEN + LOBBY BAR —

Semi-exclusive

Standing : up to 120 guests



PO RESTAURANT —

Non-exclusive only

Seated : up to 30 guests

联系方式

For the ultimate event, The Warehouse Hotel is available for exclusive bookings for a minimum of 3 days / 2 nights. Hotel full buyout includes all 37 guest rooms, The Den, The Lobby Bar, and Po Restaurant.

Submit an enquiry at
www.thewarehousehotel.com/events
or please write to us at
reservations@thewarehousehotel.com

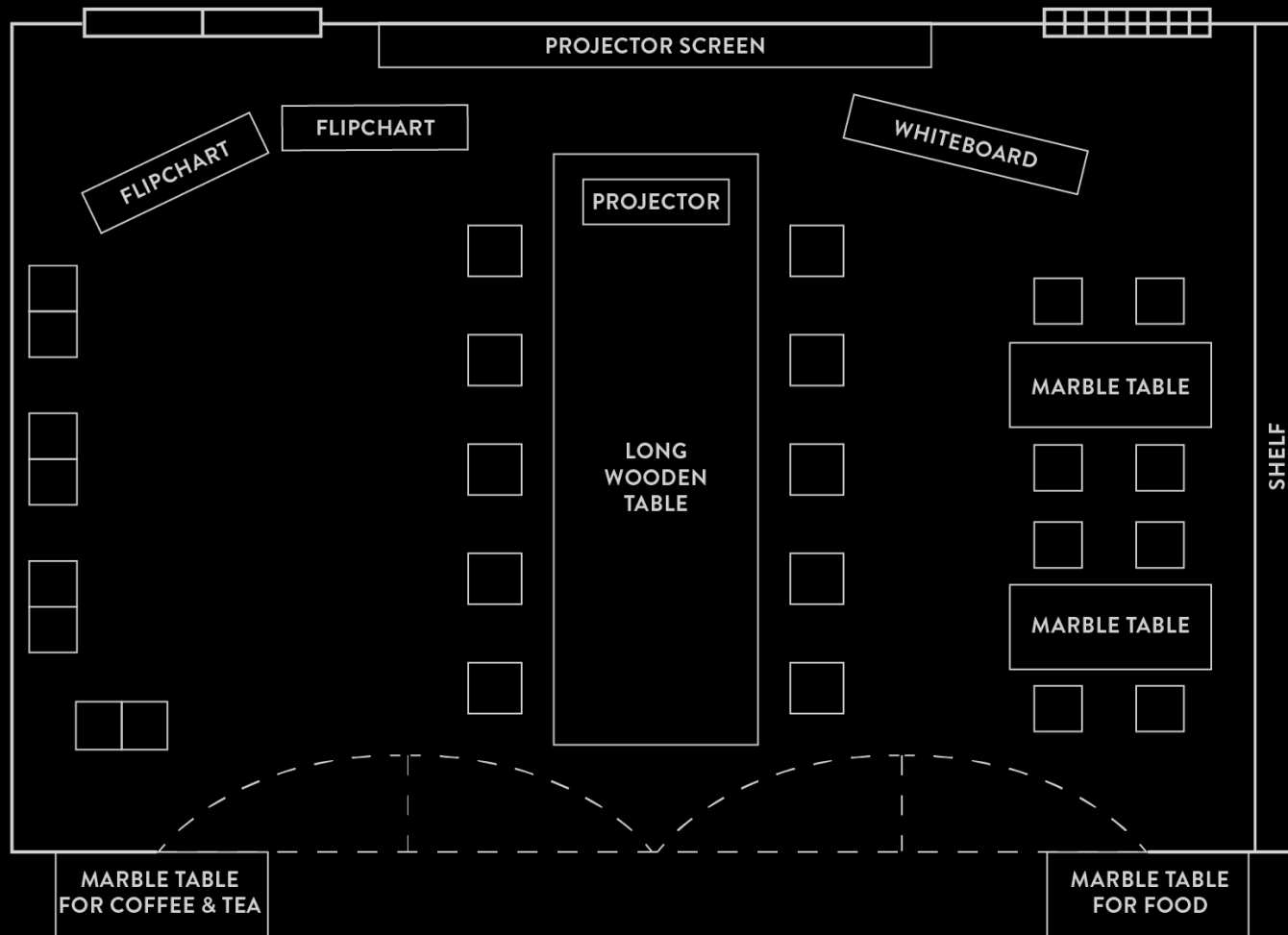
The Warehouse Hotel
320 Havelock Road
Robertson Quay
Singapore 169628

APPENDIX

Additional layouts for
The Den - Meetings & Dining

THE DEN LAYOUT (MEETINGS v1)

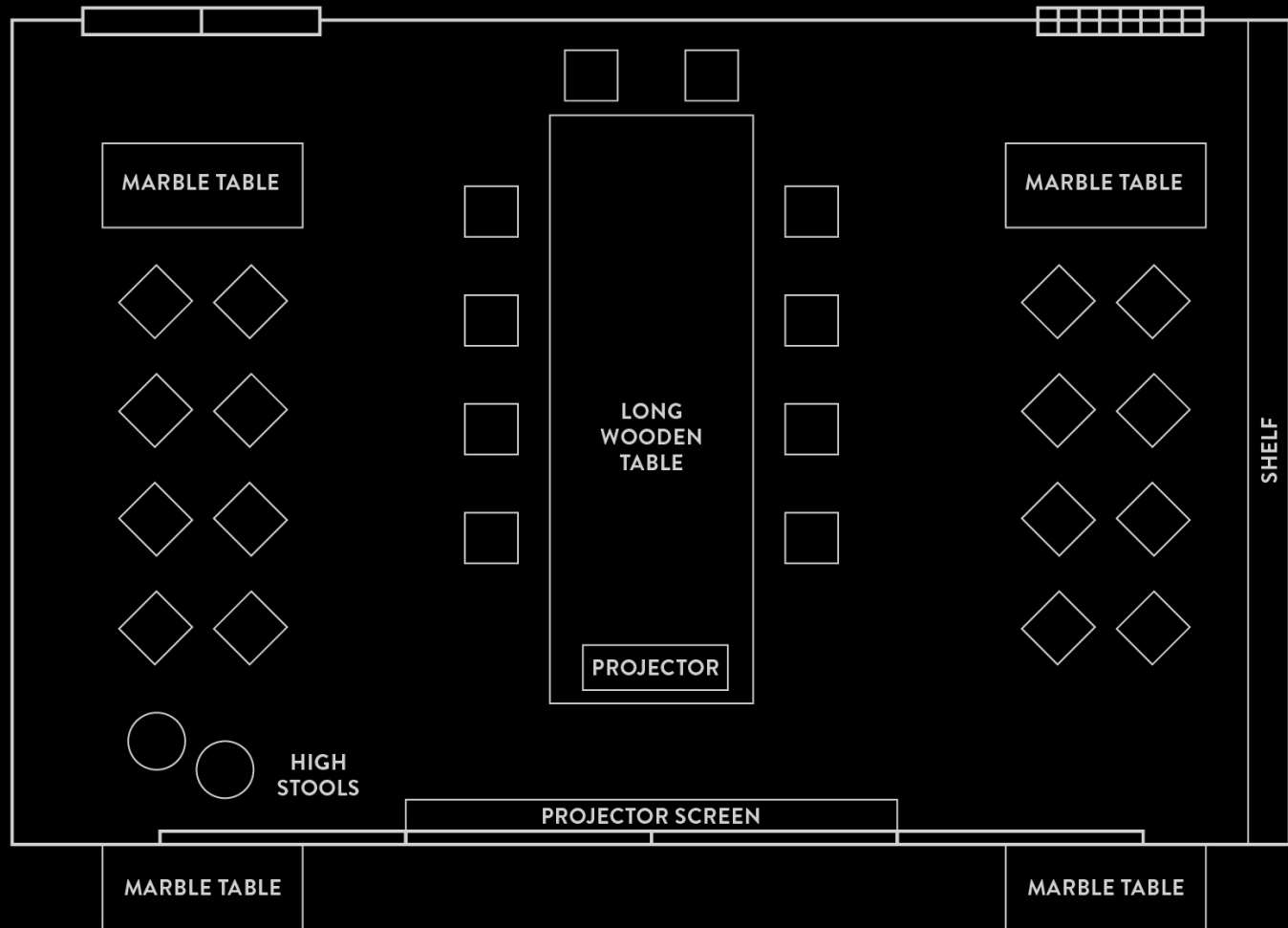
Meetings for up to 10-18
pax with more space for
flipcharts, whiteboard and
guest movement



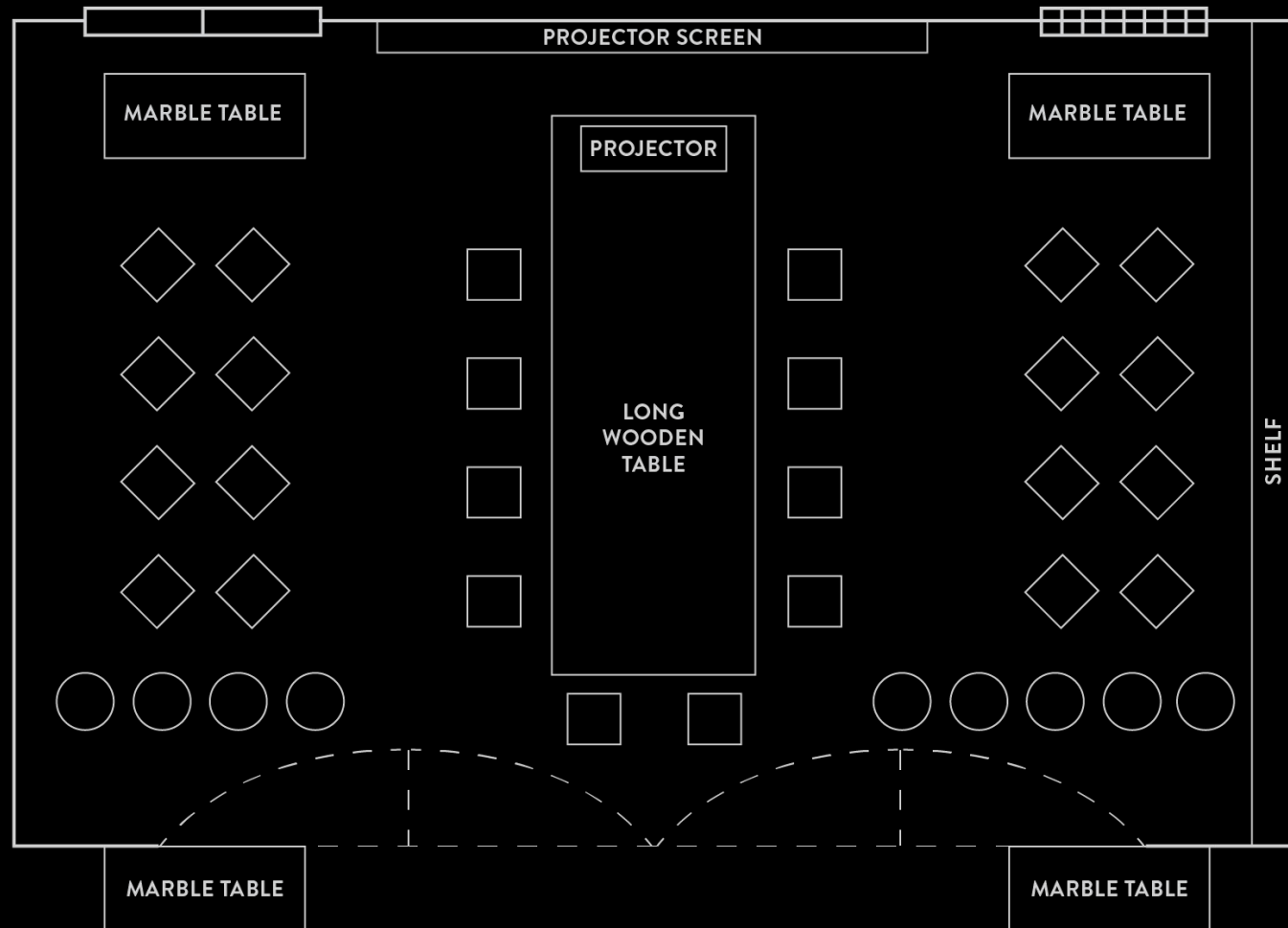
THE DEN LAYOUT (MEETINGS v2)

Meeting for up to 26
persons and using blinds as
screen to project
presentation

A maximum of 3 high stools
can be added for panel
speakers. Tea break set up
will be outside the room



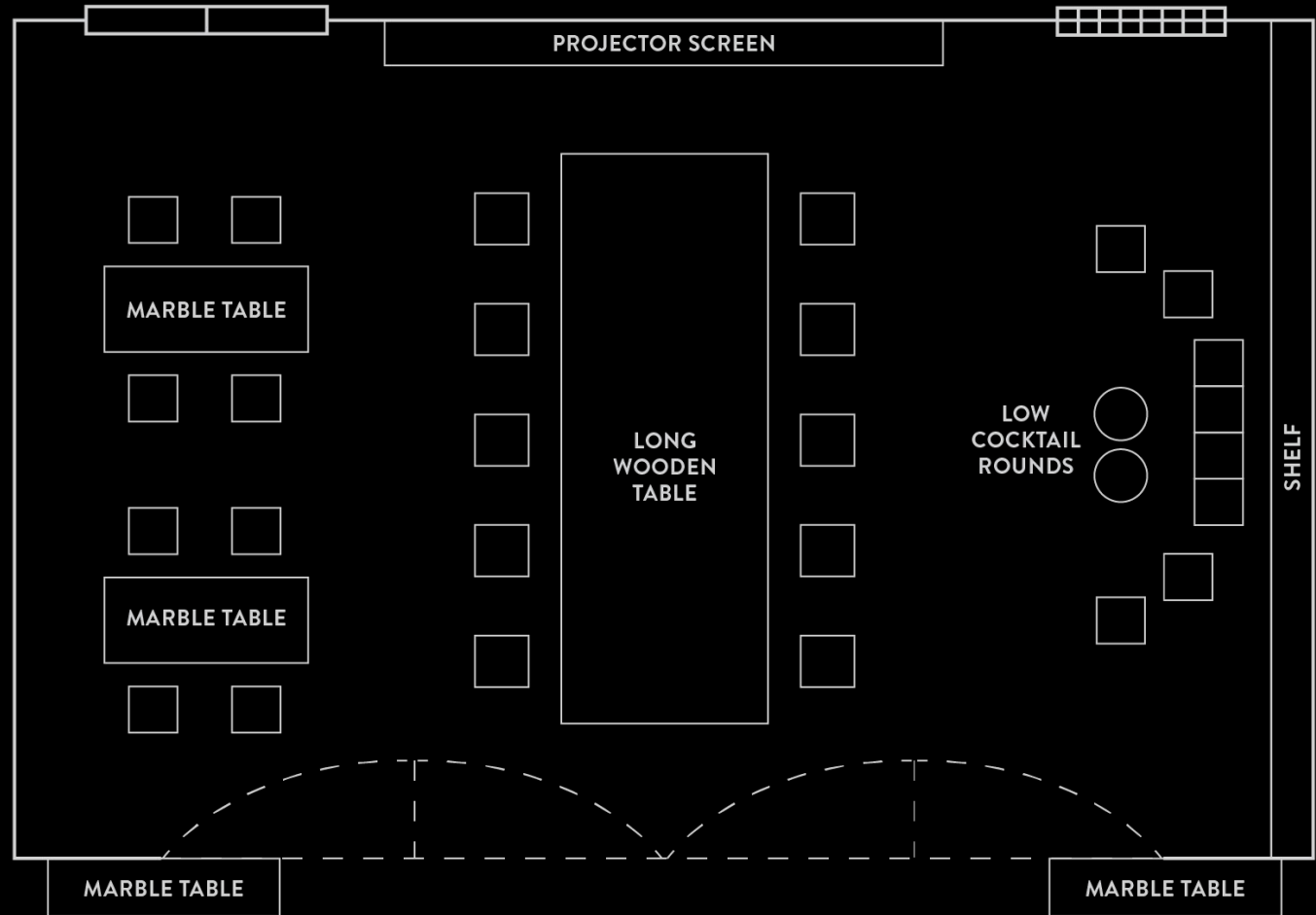
THE DEN LAYOUT (MEETINGS v3)



Theatre Style for up to 35
persons with tea break set
up outside the room

THE DEN LAYOUT (DINING v1)

Private dining for up to 12 persons with lounge setting on one side for pre-dinner drinks



THE DEN LAYOUT (DINING v2)

Private dining for up to 20
persons with lounge
setting on one side for
pre-dinner drinks

